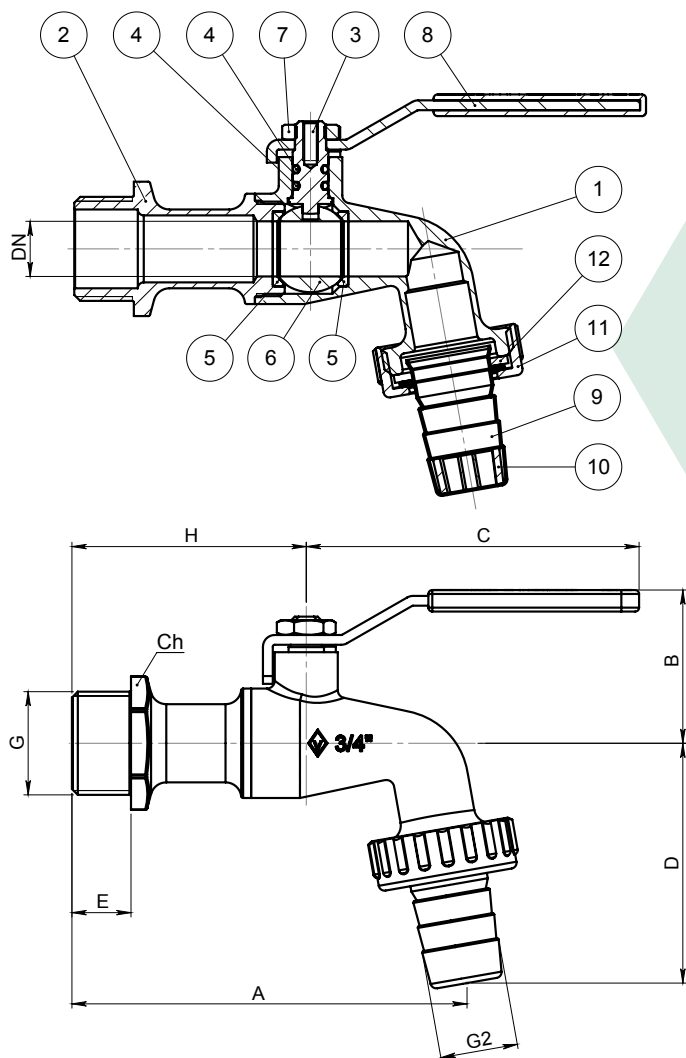


# Scheda Tecnica *Technical sheet*

<b>ART.661</b>  <i>Hose bibcock, with steel handle. Size. from 1/2" to 1".</i>	SPECIFICATION		APPLICATION	TECHNICAL NOTES
	Series	0661	Assembly in rigid pipe system	Item designed, manufactured and tested in accordance to: EN 1213:2003 Manufacturing process managed in accordance to: EN ISO 9001
	Thread ends	Male-Hose UNI ISO 228/1	Nominal pressure (PN) in bar: 16	
	Orifice	from 10 to 15 mm	KV: Flowrate coefficient m <sup>3</sup> /h	All valves comply with directive 2014/68/UE and are 100% tested with electrically controlled pneumatic seal test.
	Actuator	90° rotation with mechanical stop	Direction of flow: as desired	
	Operator	Steel handle	Temperature range: -20°C / +120°C	2 YEARS warranty.
			Use: Water	Manufactured in brass alloy compliant with EN 12165-CW617N-DW.



N°	Descrizione	Description	Materials	Treatment	Q.ty
1	Corpo	Body	CW617N	Nickel Plated	1
2	Manicotto	End connection	CW617N	Nickel Plated	1
3	Perno	Stem	CW614N		1
4	O-ring	O-ring	NBR70sh		2
5	Guarnizione sede sfera	Ball seal	PTFE		2
6	Sfera	Ball	CW617N	Ni+Cr	1
7	Dado	Nut	STEEL	Zinc Plated	1
8	Leva	Handle	STEEL	Printed	1
9	Portagomma	Hose nozzle	CW617N	Nickel Plated	1
10	Rompigetto	Antisplash	PP Copolymer		1
11	Girello	Nut	ZAMA	Nickel Plated	1
12	Guarnizione	Seal	NBR70sh		1

DN	G	G2	A	B	C	D	E	H	Ch	PN
10	1/2"	15	87	37	85	52	11	53	24	16
14	3/4"	20	100,5	39,5	85	61,5	12	59,5	30	16
15	1"	25	120	40,5	85	70	15	70	36	16